

เครื่องสแกนหน้าบันทึกการทำงานพร้อมระบบควบคุมการเปิด-ปิด ประตู

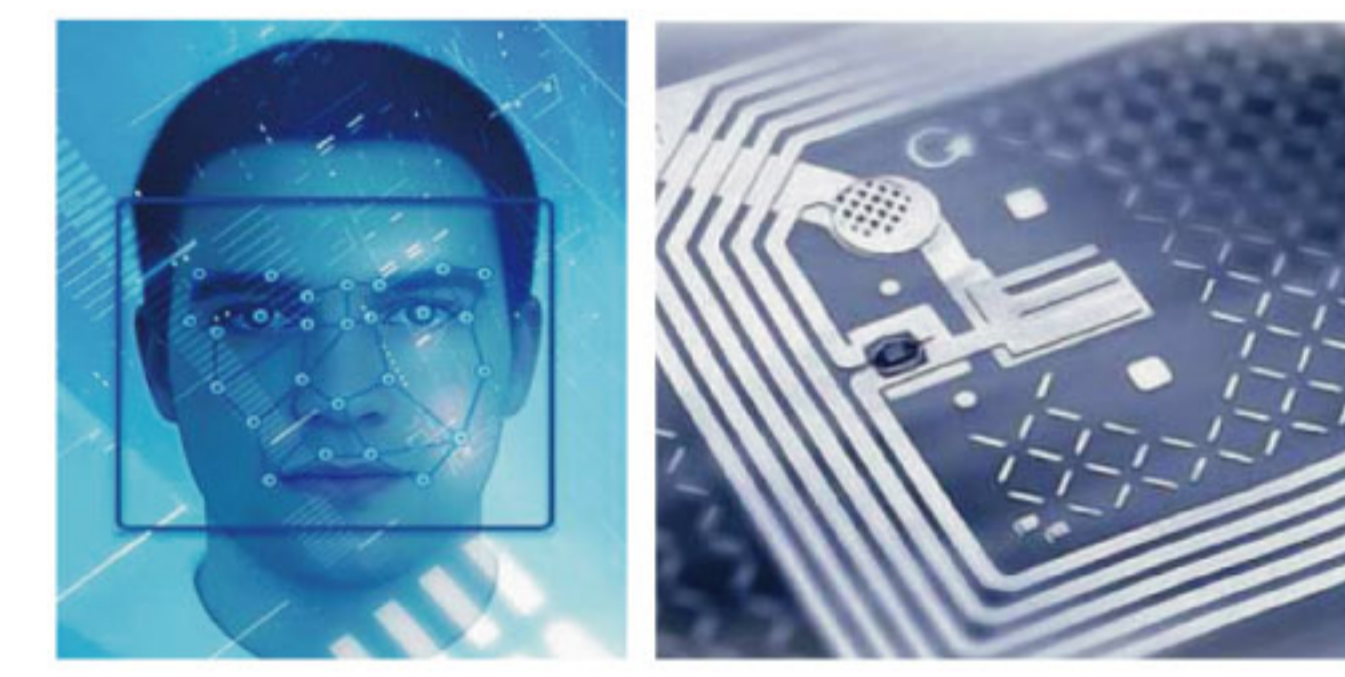
S503

FACE SCAN

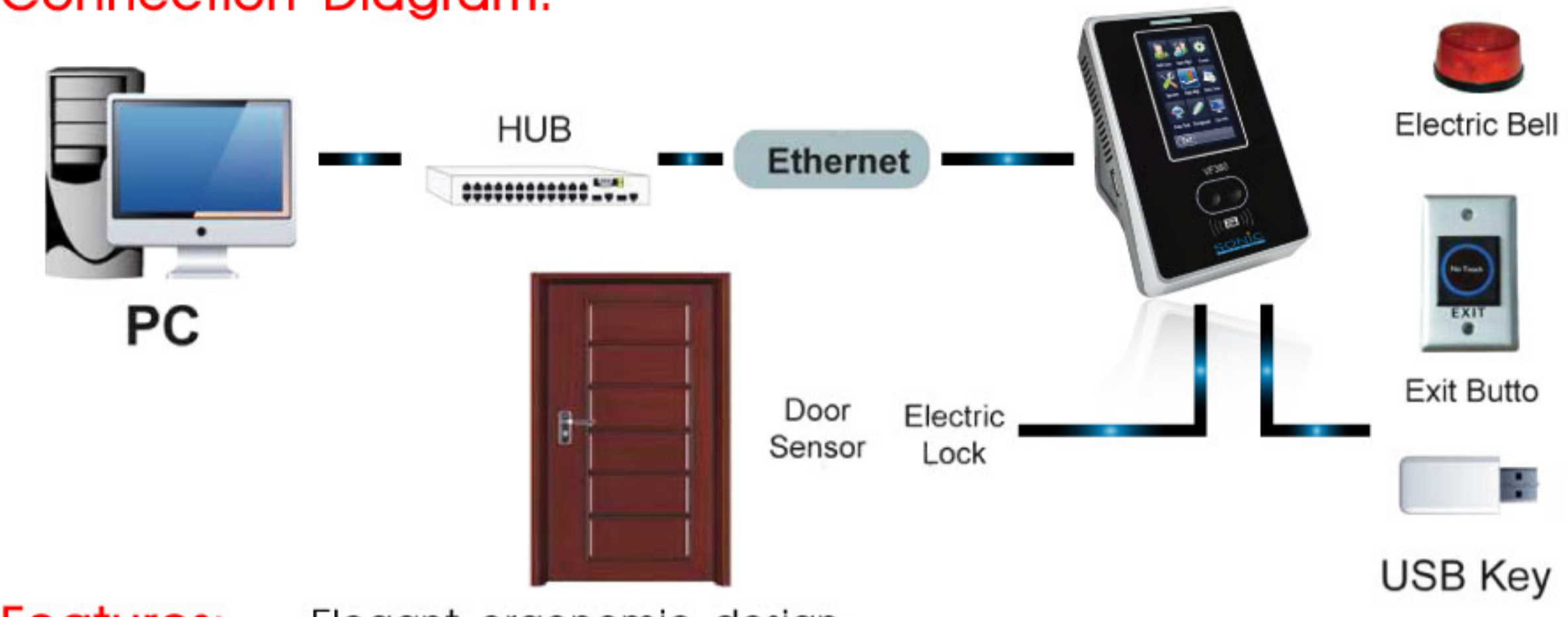


- รองรับระบบควบคุมประตู
- หน้าจอ 3-inch TFT touch screen
- รองรับ 200 ใบหน้า
- รองรับการ์ดได้ 10,000 ใบ
- จดจำข้อมูลสูงสุด 100,000 ข้อมูล

S503 is a face identification T&A terminal with simple access control functions, which can connect with 3rd party electric lock, door sensor, and exit button. Face, PIN and RFID recognition modes are available. VF380 captures the relative position, size, and shape of the user's eyes, nose, cheekbones, and jaw features to ensure accuracy of the identification. All the settings can be easily done on 3-inch TFT touch screen. With a VF380 you can manage your workforce and access control efficiently.



Connection Diagram:



Features:

- Elegant ergonomic design.
- Ethernet and USB (host and client) communication.
- 3-inch TFT touch screen, T9 Input, 9 Digit User ID.
- Infra-red optical system enables user-identification in poorly lit environment.
- Optional with Mifare card module.
- Professional face identification algorithm.
- 3rd party electric lock, door sensor, and exit button.

Specifications:

Display	3-inch Touch Screen
Face Capacity	200 (1:N)
ID Card Capacity	10,000
Logs Capacity	100,000
Communication	Ethernet and USB (host and client)
Standard Functions	ID card Automatic Status Switch, Self-Service Query, Work Code, T9 Input, 9 Digit User ID, DLST?Scheduled-bell, 3rd Party Electric Lock, Door Sensor, Exit Button and Short Message.
Optional Function	Mifare Card.
Power Supply	12V/1.5A
Verification Speed	Less than 1second
Operating Temperature	0-45
Operating Humidity	20%-80%
Dimensions	104.70(L)*160.00(H)*36.00(W) mm

